



## 8 Seaview Street Bonny Hills NSW

3 3 4

Perched in one of Bonny Hills' most sought-after streets, this impressive two-storey home offers a blend of location, lifestyle, and breathtaking vistas. Enjoy sweeping views of the ocean from the upper level, stretching all the way to Lighthouse Beach in Port Macquarie.

The heart of the home is an open-plan kitchen, dining, and living area that captures the stunning ocean views, perfect for both relaxation and entertaining. A formal dining space and a study nook provide extra versatility. The upper level boasts three spacious bedrooms, including a master suite with direct access to the balcony, an ensuite, and a walk-through robe. The remaining bedrooms are serviced by a convenient 3-way bathroom with a separate toilet.

Step outside to a large undercover deck, ideal for alfresco dining, where you can soak in both ocean and mountain views. Downstairs, the oversized garage includes a workshop, laundry, and an additional third toilet and shower. A lower deck leads to beautifully established gardens, creating a peaceful retreat.

Just 600m to Bartlett Beach and Reserve, or a short 300m stroll to Grants Head Reserve and its scenic walking tracks

**Type** : House  
**Price** : Auction Guide \$1,050,000 - \$1,150,000  
**Land Size** : 462 sqm  
**View** : <https://www.jandsrealestate.com.au/sale/nsw/mid-north-coast/bonny-hills/residential/home/8140513>



**Jon Slater**  
02 6586 3333

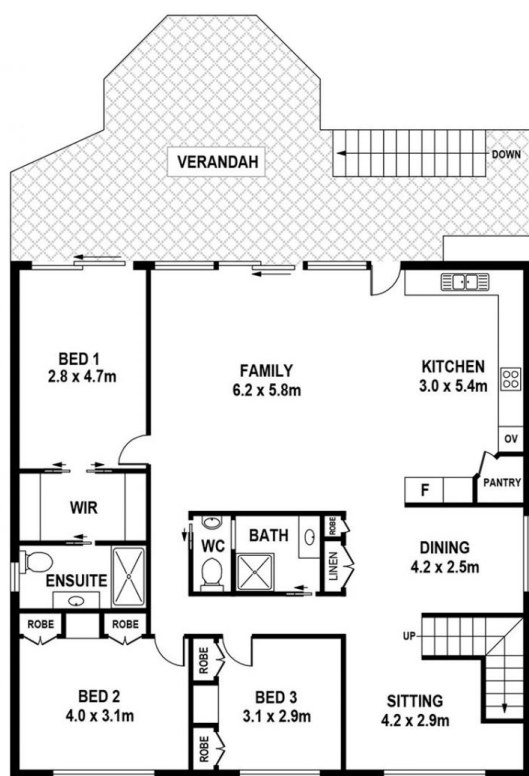


**Kylie Moss**  
02 6586 3333

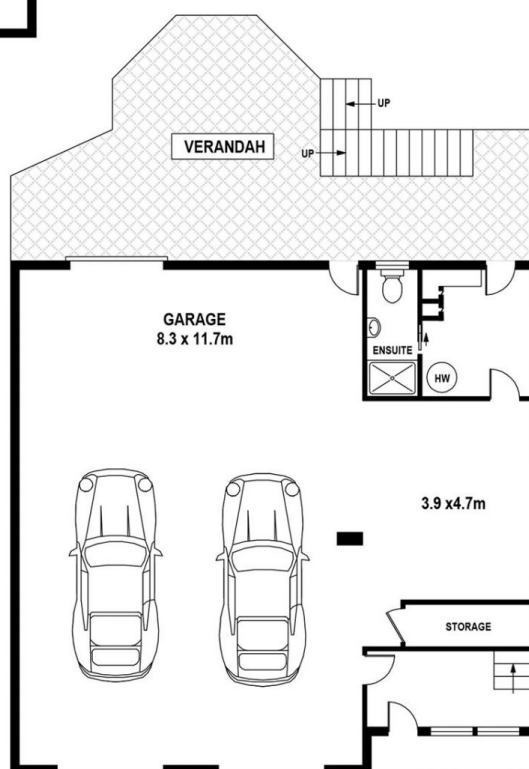
[For full version visit the website](https://www.jandsrealestate.com.au)

<https://www.jandsrealestate.com.au>

2 Bartlett Street Bonny Hills NSW  
02 6586 3333



UPPER FLOOR



LOWER FLOOR



8 Seaview Street, Bonny Hills

INTERNAL - 280m<sup>2</sup>  
EXTERNAL - 98m<sup>2</sup>

DISCLAIMER

PLANS SHOWN ARE FOR MARKETING PURPOSES ONLY. ALL DIMENSIONS ARE APPROXIMATE AND NOT TO SCALE. THEY ARE SUBJECT TO ERRORS AND INACCURACIES AND NO LIABILITY WILL BE ACCEPTED. INTERESTED PARTIES SHOULD MAKE THEIR OWN INQUIRES.

